



Batumi Shota Rustaveli State University







**BATUMI SHOTA RUSTAVELI  
STATE UNIVERSITY**













# Batumi

*Batumi is the administrative and cultural center of Ajara Autonomous Republic. It is situated in the south-west of Georgia.*

*Batumi, the maritime gate of Georgia, is one of the oldest and strategic cities. The city counts more than 2000 years of history.*

*It stretches 16,6 kilometers along the coast of the Black Sea from the north-east to the south-west. It has deep, safe and natural harbor on the coast of Batumi Bay. The earliest information about Batumi appeared in works of the 4th century BCE Greek philosopher Aristotle. He named the city situated by the Black Sea in Colchis as "Bathus", a Greek word for "deep". Indeed, Batumi has one of the deepest and the most convenient harbors in Europe.*

*In the 2nd century CE, a temporary Roman fort was built near the settlement, and even earlier, another Roman fortress, Gonio, was constructed 10 km south of Batumi. In the 6th century, the Byzantine Empire, which succeeded the Roman Empire, built the fortress of Petra, located 15 km north of Batumi.*

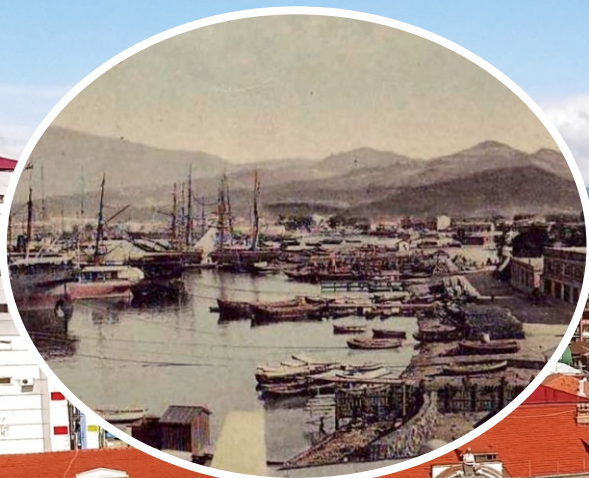
*Over the centuries, Batumi has been a vital port on the Black Sea, coveted for its strategic importance, connected with ancient Greece, the Roman Empire, the Ottoman Empire, Russia, and even Britain. You can learn about Batumi's rich history in several city museums, including the Batumi Archaeological Museum, the Ajara State Museum, and the Nobel Brothers Museum, each offering insights into different periods of the Batumi's past.*

*Growth and development of modern Batumi began in Porto Franco period in the 19th century and continued more rapidly later on. The Seaside Park is one of the charms of the city. Batumi locals call it "Boulevard". It stretches along the seashore to the north-west of Batumi like a green line. The Boulevard provides all the conditions for leisure and entertainment.*





## Places to Visit



Places to Visit







## *Shota Rustaveli*

*Great Georgian poet of  
12th century, author of the  
masterpiece of the world  
literature "The Knight in the  
Panther's Skin".*

*Shota Rustaveli is the  
greatest Georgian author of  
all times.*







## Batumi Shota Rustaveli State University

*The academic potential, traditions and the geographical location of Batumi Shota Rustaveli State University determine the priorities of its scientific-research activities. The academic and research staff of the University are successfully engaged into the directions of Humanities, Natural Sciences, Law, Social Sciences, Exact and Computer Sciences, Engineering, Technologies, Business and Public Health as well as agricultural fields. Batumi Shota Rustaveli State University is a multi-functional educational and scientific institution where a unified space of academic and vocational education and research is created through the cooperation of students, professors, teachers and researchers. A number of scientific-research projects of international and national significance have been accomplished on the university base.*

*The university has close partnership relations with the leading higher educational institutions within and outside the country. BSU is considered a desirable host for the international conferences and symposia, summer schools held in various fields of science. Apart from this, the academic and scientific faculty of the university actively participates in conferences and exchange programs in different countries of the world.*





## International Relations

*The Department of Strategic Development and International Relations deals with the establishment of relations with foreign universities and relevant scientific-research institutions as well as educational centers. It aims at disseminating the information about the exchange programs and their implementation.*

*Students from various countries are enrolled at BSU Bachelor, Master and Doctoral cycles. The Department ensures support of foreign students, fosters incoming and outgoing students' mobility and facilitates them in adaptation to the university life.*

*BSU is the leader HEI in the country in regard to exchange programs and international projects.*

*BSU has signed a great number of memoranda and agreements with foreign universities and research centers.*

*BSU is the venue of various annual international events such as conferences, summer schools, etc. in many different fields.*







## International Agreements

	Armenia		Kirgizstan
	Austria		Latvia
	Azerbaijan		Lietuva
	Belgium		Moldova
	Bosnia and Herzegovina		North Macedonia
	Bulgaria		Netherlands
	China		Norway
	Czech Republic		Poland
	Estonia		Portugal
	Finland		Romania
	France		Canada
	Germany		Slovakia
	Greece		Slovenia
	Hungary		Spain
	Iran		Turkey
	Israel		Ukraine
	Italy		United Kingdom
	Kazakhstan		USA
	Uzbekistan		Cyprus



More than **100** Foreign Universities



Since 2007 the university has been involved in the **Erasmus Mundus** Exchange Programs and **TEMPUS** grant projects, which support students as well as staff to integrate into the internationalization process. They also facilitate participants to gain immense experience, exchange knowledge and skills and furthermore put all of these into practice.

The project has supported BSU in implementation of reforms in higher education with the assistance and affiliation to the partner European HEIs.

Since 2015 BSU has been involved in **Erasmus+** Program which brings together existing EU programs in the fields of Education, Training and Research.

Our University has gained grants in the following actions:



Marie Curie

• Credit Mobility (ICM)

• Capacity Building for Higher Education (CBHE)

• ERASMUS MUNDUS JMD

• Jean Monnet

• Marie Curie

• Horizon 2020

• Horizon Europe

• AUF

• Mevlana



**ERASMUS+** "Youth Entrepreneurship in the Eastern Partnership Countries: The Experience of Formation and Prospects for Development"

**Chair of UNESCO** on Internationalization of Higher Education through Interdisciplinary Research and Development at BSU

**Center For International Education- Batumi**

**Higher Education Support Sub-Program of the Ministry of Education, Culture and Sport of Ajara Autonomous Republic – "Study Abroad - Bachelor's Program"**





## Faculties



**Faculty of Economics and Business**



**Faculty of Exact Sciences and Education**



**Faculty of Humanities**



**Faculty of Law and Social Sciences**



**Faculty of Natural Sciences and Health Care**



**Faculty of Technology**



**Faculty of Tourism**

## Educational Programs

- **One-Cycle**
- **Vocational**
- **Undergraduate (Bachelor)**
- **Postgraduate (Master)**
- **Integrated BA-MA**
- **Doctoral (PhD)**









**Faculty of  
Economics and  
Business**



## **UNDERGRADUATE (BACHELOR) EDUCATIONAL PROGRAMS**

- Business Administration
- Economics



## **POSTGRADUATE (MASTER) EDUCATIONAL PROGRAMS**

- Business Administration
- Economics
- Finance and Banking

## **DOCTORAL (PhD) EDUCATIONAL PROGRAM**

- *Business Administration*







**Faculty of  
Exact Sciences  
and Education**

## **UNDERGRADUATE (BACHELOR) EDUCATIONAL PROGRAM**

- *Mathematics*
- *Physics*
- *Computer Science*
- *Preschool Education*

## **POSTGRADUATE (MASTER) EDUCATIONAL PROGRAMS**

- *Mathematics*
- *Physics*
- *Computer Science*
- *Education Administration*
- *Vocational and Continuing Education*

- *Integrated Bachelor-Master Educational Program for Preparation of Primary School Teachers of General Education*

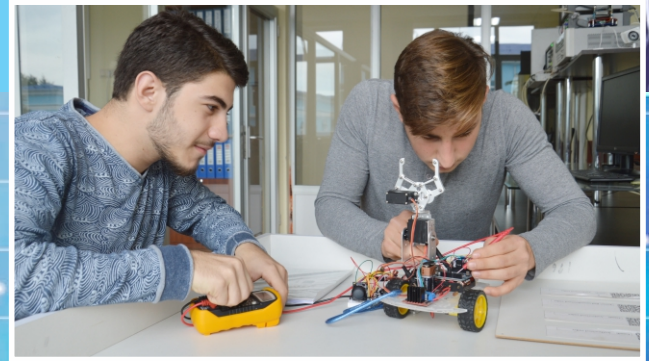
## **DOCTORAL (PhD) EDUCATIONAL PROGRAMS**

- *Education Sciences*
- *Physics*

## **OTHER EDUCATIONAL PROGRAMS**

- *Teacher Preparation Education Program (60 ECTS credits)*
- *Special Education Teacher Training Program (60 ECTS credits)*





- **Centre for Languages and Information Technologies**
- **Child Rights Knowledge Centre**
- **Innovation Laboratory**
- **Physics Laboratory**
- **Robotechnics Laboratory**





## Faculty of Humanities

### UNDERGRADUATE (BACHELOR) EDUCATIONAL PROGRAMS

- *Archaeology*
- *English Philology*
- *Georgian Philology*
- *German Philology*
- *History*
- *Journalism*
- *Philosophy*
- *Romance Philology (French, Italian, Spanish Languages and Literature)*
- *Slavic Philology*
- *Turkology*

### POSTGRADUATE (MASTER) EDUCATIONAL PROGRAMS

- *Classical Archaeology of the Black Sea and the Caucasus*
- *Digital Media and Innovations*
- *European Philology (English Philology / German Philology / French Philology)*
- *Georgian Literature and Comparative Literary Studies*
- *History*
- *Linguistics*
- *Philosophy*
- *Translation Studies and Intercultural Communication*
- *Turkology*

### DOCTORAL (PhD) EDUCATIONAL PROGRAMS

- *Archaeology*
- *History*
- *Philology*





- Centre for Kartvelian Studies
- Centre for Translation and Interdisciplinary Research
- Centre of Digital Humanities
- Research Centre for the Exchange of Science and Academic Culture in the Black Sea Region
- Multimedia Centre
- Centre for Study of World History Issues
- Research Laboratory of New and Recent History Sources and Historiography of Georgia
- Archaeological Institute for South-Eastern Black Sea Studies



**Faculty of  
Law and Social  
Sciences**

## **UNDERGRADUATE (BACHELOR) EDUCATIONAL PROGRAM**

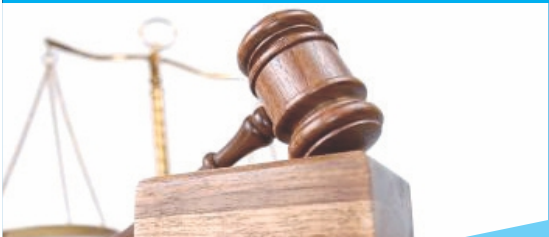
- Law
- Public Administration
- European Studies
- International Relations
- Psychology

## **POSTGRADUATE (MASTER) EDUCATIONAL PROGRAMS**

- Public law
- Private law
- Criminal law
- Double diploma program with MRU - European/ International Business Law
- Double diploma program with MRU - International Law







- Psychological Clinic
- Imitation Hall
- Criminology Laboratory
- Social Studies Centre
- European Studies Centre
- Centre for the Study of Public Administration Issues
- Jean Monnet Chair: European Law in the South Caucasus – EULISC Batumi, "Education, Audiovisual and Culture Executive Agency, Lifelong learning"
- Jean Monnet Chair: "The European Union's fundamental values: Democracy, Rule of Law and Protection of Human Rights"
- Jean Monnet Module: "Political Criteria of the Accession to the European Union and Europeanization of Georgia, Moldova, and Ukraine"
- Jean Monnet Chair: „Closer to the EU“ Research Center for Comparison, Analysis and Generalization of Georgian Law, Legislation and Practice





## Faculty of Natural Sciences and Health Care

### ONE-CYCLE EDUCATIONAL PROGRAMS

- *Medical Doctor (In English)*
- *Medicine*
- *Dentistry*



### UNDERGRADUATE (BACHELOR) EDUCATIONAL PROGRAMS

- *Biology*
- *Chemistry*
- *Ecology*
- *Geography*
- *Pharmacy*
- *Physical Medicine and Medical Rehabilitation*

### POSTGRADUATE (MASTER) EDUCATIONAL PROGRAMS

- *Biology*
- *Chemistry*
- *Ecology*
- *Physical Geography and Sustainable Development*

### DOCTORAL (PhD) EDUCATIONAL PROGRAMS

- *Analysis of Natural Compounds*
- *Biology*

*The English educational program of Medical Doctor is popular and competitive, with more than 700 international students studying here.*

*A design of the new building for the Medical Doctor students*



- **Medical Doctor English Program Management Center**
- **Medical Education and Medical Professional Development Centre**
- **Western Georgia Regional Chromatographic Center**
- **Clinical Skills and OSCE Center**
- **Dental Clinic "BSU-Dent"**
- **Laboratory Health and Safety;**
- **Laboratory of Immunogenetics**
- **Laboratory of Cellular Technology**
- **Laboratory of Pharmacognosy**
- **Laboratory of Ecology**
- **Laboratories of Chemistry**
- **Lecturio - an online learning platform for medical students and healthcare professionals**







**Faculty of  
Technology**



## **UNDERGRADUATE (BACHELOR) EDUCATIONAL PROGRAMS**

- *Civil Engineering*
- *Architecture*
- *Electronics, Telecommunication, and Internet Engineering*
- *Oil and Gas Engineering*
- *Agrarian Technologies*
- *Food Technology*



## **POSTGRADUATE (MASTER) EDUCATIONAL PROGRAMS**

- *Civil and Industrial Engineering*
- *Techniques and Technologies of Oil and Gas Extraction, Transportation and Storage*





- Fab Lab
- Laboratory of Building Materials and Construction Structures
- In Vitro Laboratory
- Extension Centre
- Electronics, Telecommunication and Internet Engineering Laboratory
- Innovation Center
- Greenhouse
- Technopark





**Faculty of  
of Tourism**



## UNDERGRADUATE (BACHELOR) EDUCATIONAL PROGRAM

- *Tourism*



## POSTGRADUATE (MASTER) EDUCATIONAL PROGRAM

- *Tourism Management*







- Hotel Management System - OPERA
- Restaurant Management System - MICROS
- Restaurant Demonstration Room
- Training Centre for Development of Sustainable Tourism in Rural Areas
- Geoinformation and Tourism Technologies Centre
- 16 English-language courses integrated into the program course
- Internship in German tourism industry organizations
- Short term training program in "International Hotel Management" Batumi-Berlin
- Participation in International Exhibition of Tourism and Hotel Equipment - "EBIT"
- Field training practice for students
- A Francophone Employment Center (CEF) under the auspices of the University
- Agency of Francophonie (AUF)



## **VOCATIONAL EDUCATIONAL PROGRAMS:**

- *Nursing*
- *Educator*
- *Accounting*
- *Financial Services*
- *Library Work*
- *Gardening*
- *Forestry*

## **VOCATIONAL TRAINING/RETRAINING PROGRAMS:**

- *Use of Basic Forest and Non-timber Resources*
- *Laboratory Health and Safety*
- *Integrated Plant Protection*

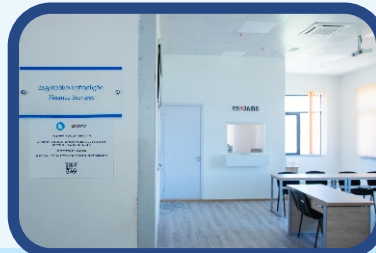
## **SHORT-TERM EDUCATIONAL PROGRAMS**

- *Georgian language for foreigners*
- *Short-term targeted educational programs for training entrants in Georgian language and literature, English language and Mathematics*
- *Short-term educational program for learning English*
- *Professional development of pre-school educators*





**Vocational  
Program  
Management  
and Lifelong  
Learning Centre**





## Institute of Phytopathology and Biodiversity

*The Institute conducts fundamental, applied scientific research, as well as expert consulting activities in two directions:*

**Phytopathology:** *With 65 years of experience, the institute prioritizes research on the monitoring and diagnosis of pathogens and pests that cause diseases in economically important agricultural and other plant crops. This includes studying the biology and epidemiology of phytopathogens (fungal, bacterial, including quarantine species) using classical and modern molecular biology methods. The institute also conducts population-genetic studies of plant pathogens and develops measures to combat plant diseases and pests.*

**Biodiversity** – *Agrobiodiversity Research and Conservation; integrated scientific investigation, habitat and species biodiversity conservation and rational use of wetland of Colchis lowland and Ajara highlands; examination of the distribution of plants of foreign origin (advent, invasive, naturalized, weeds); ethnobotanical and plant pharmacognostic studies are also conducted; research focusing on the study of ichthyofauna, marine mammals, and ecosystem services of the Black Sea in general. The ongoing research at the institute serves as the basis for implementing climate change mitigation measures and socially, economically, and ecologically beneficial projects.*

*The institution's wide international scientific cooperation and active involvement in open science and the third mission are of significant importance.*

*The results of the scientific research carried out at the institute led to the recognition of the UNESCO WNH nomination “Colchis rainforest and wetlands” in 2021.*

*From 2024 BSU was awarded the Interreg NEXT Black Sea grant through the institute and became a lead partner of the grant: “Cooperation and Awareness for Pollution-free and Environmentally Sustainable Black Sea”.*







## NIKO BERDZENISHVILI INSTITUTE

*The Institute was founded in 1958. It consists of three departments (History-Archaeology; Ethnology and Sociological Research; Folklore, Dialectology and Immigrant Literature Research) and has been studying the issues of history, archaeology, ethnology, folklore and dialectology of individual regions of south-western Georgia (including, first and foremost, Ajara and neighboring parts) since the day of its foundation.*

*Researchers of the Institute conduct annual expeditions and participate in international and regional scholarly forums.*







## Institute of Agrarian and Membrane Technologies

*At the Institute of Agrarian and Membrane Technologies research is carried out in the areas of membrane, agricultural and food technologies:*

*Development and implementation of electromembrane, baromembrane and sorption processes and technologies;*

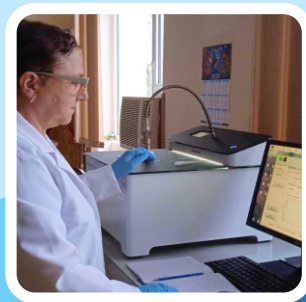
*Development and implementation of agro and processing technologies ensuring the rehabilitation and development of tea growing, citrus growing, viticulture and other agricultural fields;*

*Development and implementation of plant reproduction methods in the in vitro system; Expert-consulting activities.*

*The laboratories of the Institute of Agrarian and Membrane Technologies and the trial-experimental area of technological processes are the basis of research and training practice for students of the educational programs of chemistry, biology, ecology, agricultural and food technologies.*







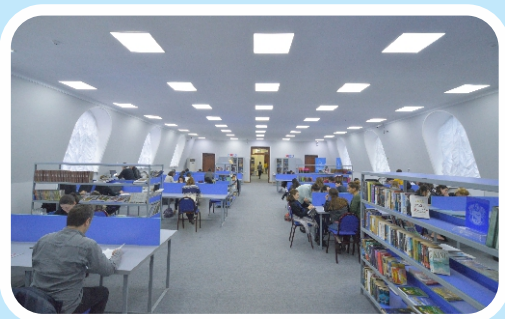
## The University Library

**BSU library occupies 2 000 sq/m. It has a well-arranged reading halls and information technological space. There are faculty libraries as well, functioning within the frames of the university library.**

**The book fund of the library has been paid a particular attention since the first days of the university foundation. For the present time it includes 362 893 books and journals in almost every branch of science.**

**There are about 1500 copies of unique books published in 1815-1899 and 1900-1917 preserved in the library. The books were inherited to the university from the former Boys' Gymnasium.**

**The BSU Library is rich in textbooks, fiction, periodicals and reference literature. Computer technologies provide access to modern and classic educational resources in both print and electronic forms. For the efficient use of the books, an internal electronic library has been created, supplying full storage of the study materials.**







**Publishing House  
Batumi Shota Rustaveli State University Press**

# Student Life

## DEPARTMENT OF STUDENT CAREER DEVELOPMENT, CULTURE AND SPORT

*The Department of Student Career Development, Culture and Sport is an auxiliary structural unit of BSU, founded in 2018. The function of the department is: protect the rights/interests of students; support disabled students; promote university activities, educational-scientific, cultural, sports activities; inform students about different competitions/projects/programs; promote students' employment and assistance in their career planning and development.*

## STUDENTS' SELF-GOVERNANCE

*The university students' self-governance was established on the basis of secret ballot, universal, equal elections and is functioning as apolitical organization. The aims of students' self-governance are:*

*To promote students in defending, strengthening and practical realization of their rights and interests;*

*To ensure students' participation in university management and support students' initiative and implementation of their projects.*

## STUDENTS' SCIENTIFIC CENTER

*It is a students' initiative group that organizes conferences, intellectual games, contests and cares about elaboration and development of academic and scientific skills in students.*

*The center annually organizes a students' essay writing contest, a scientific conference, public lectures, sessions and discussions on various topics, educational events as well as regularly publishes bulletin of students' works.*





**BSU Jazz Big Band**



**Student Theatre "Dasi"**



**University Hall**





**Women Folk Music Ensemble "Tirini"**



**BSU Band "Off Side"**



**Choreographic Ensemble "Tbeti"**



**Mariam Nodia-The World Champion in Arm Wrestling**



**Foreign Students**



**Volleyball Team**



**Football Team**



## The Dormitory

**Batumi Shota Rustaveli State University students are served by a four-story dormitory of the modern standards for 200 tenants. It is constructed based on the block principle construction.**

**The dormitory houses a conference hall, free spaces, a library, an elevator, a security office, a laundry-drying room, etc.; the blocks adjusted to the people with special needs are also envisaged.**









**WWW.BSU.EDU.GE**

**35/32 Ninoshvili / Rustaveli str.,  
Batumi 6010, Georgia**

**Tel: +995 422 271781  
E-mail: [info@bsu.edu.ge](mailto:info@bsu.edu.ge)**

